



VMS User Manual

Customer Service Center
2015-05-15

Content

1	Overviews.....	3
1.1	Description.....	3
1.2	Installation environment.....	3
2	Installation.....	4
2.1	Preparation.....	4
2.2	Installation.....	4
3	Functional Specification.....	5
3.1	Log-in page.....	5
3.2	Wizard.....	5
3.3	Device Manager.....	6
3.3.1	Search IP in LAN and Add.....	6
3.3.2	Add Group.....	7
3.3.3	Add devices manually.....	7
3.3.4	Close window.....	8
3.4	Monitoring.....	8
3.4.1	View.....	10
3.4.2	other features.....	11
3.5	Playback.....	12
3.6	Record Settings.....	13
3.6.1	Storage settings.....	13
3.6.3	Record settings.....	13
3.7	Log.....	13
3.8	Alarm info.....	14
3.9	Device Config.....	15
3.9.1	Network.....	16
3.9.1.1	Set device's IP.....	16
3.9.1.2	PPPOE.....	16
3.9.1.3	Email.....	16
3.9.1.4	FTP.....	17
3.9.1.5	RTSP.....	25
3.9.1.6	Cloud.....	25
3.9.1.7	DDNS.....	25
3.9.1.8	DAS.....	25
3.9.2	Encode.....	27
3.9.3	Camera parameters.....	27
3.9.4	System.....	28
3.9.5	Version info.....	28
3.9.6	Exception handling.....	29
3.9.7	video detect.....	29
3.9.8	Disk manager.....	30
3.9.9	Record config.....	30
3.10	Alarm config.....	30

3.11	Tour.....	31
3.12	System Config.....	32
3.13	Extensions.....	32

1 Overviews

1.1 Description

VMS is a newly developed client software for our products . The suppressible toolbar, succinct GUI and rich functionality make it a very intelligent and user-friendly monitoring management software which can be used in various scenes.

窗口支持自定义，样式丰富，满足用户多种监控环境的需求。

VMS support talk with device, instantaneous screenshots

VMS support multiple video preview at the same time.

VMS support intelligent tour plans to displace manual operations.

You can easily search video files that not only recorded in PC (Local side) but also recorded in devices.

Different alarm features meet customer's every need.

The further extensions---"My cloud" and "Maps" will make it more convenient for practical application.

1.2 Installation environment

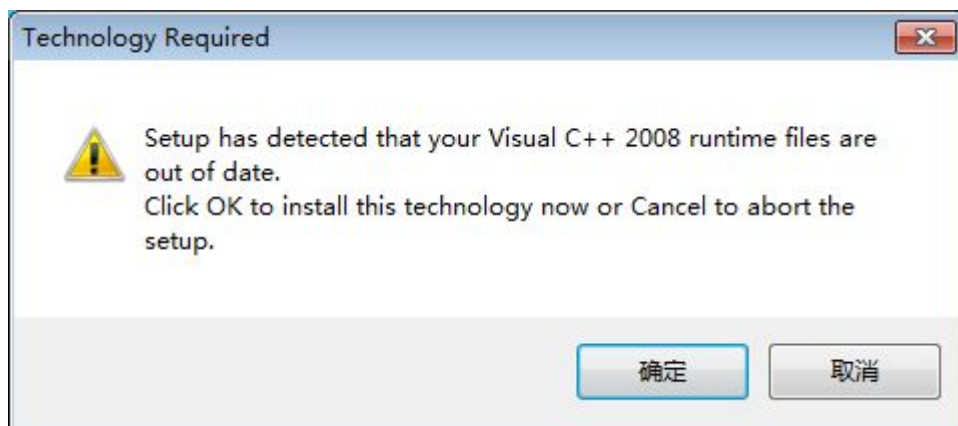
Operating system:	Windows system(it would support Mac and Linux system in subsequent version)
CPU:	Above 2.4GHz
Memory:	Above 1GB
Graphics:	Discrete graphics

- In theory the preview number is $64 * 4$. The actual preview number is limited by the properties of the server, the resolution of devices (bit rate) ,network bandwidth etc.

2 Installation

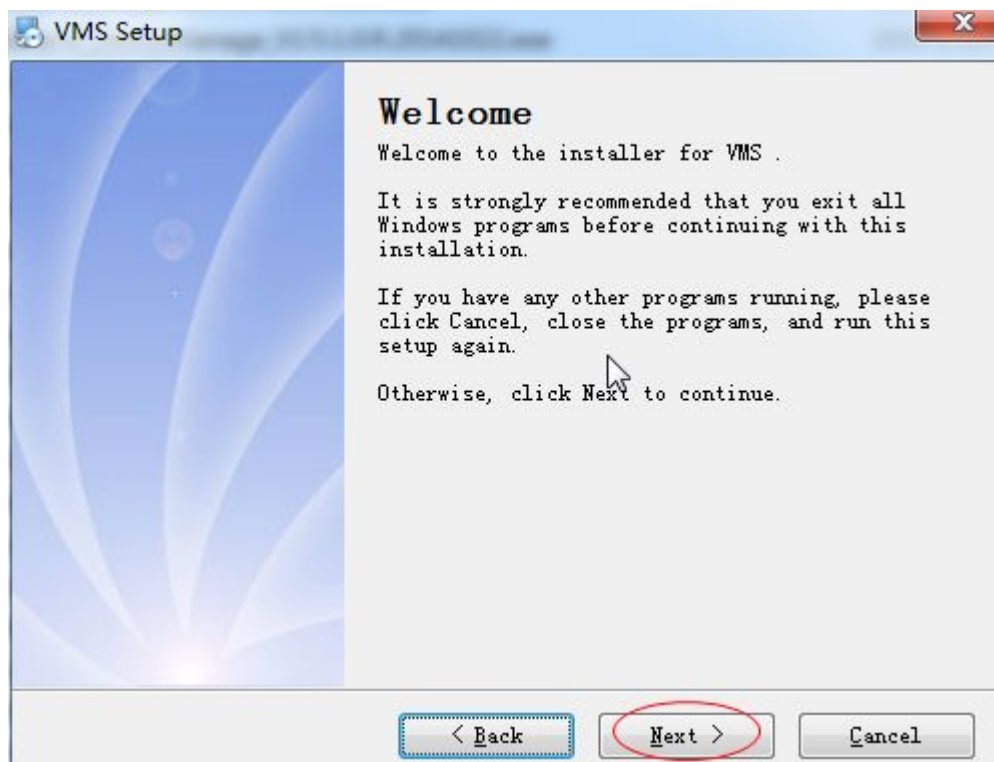
2.1 Preparation

When installing the VMS, it would prompt you to install Visual C++ 2008 first. This is to ensure your PC has installed all library files the VMS needs. So if you see the following pop-up notification, please click yes to install it.



2.2 Installation

After installing Visual C++ 2008, choose language and start installing the software.



Double click the shortcut icon on the desktop:



3 Functional Specification

3.1 Log-in page

Start VMS:

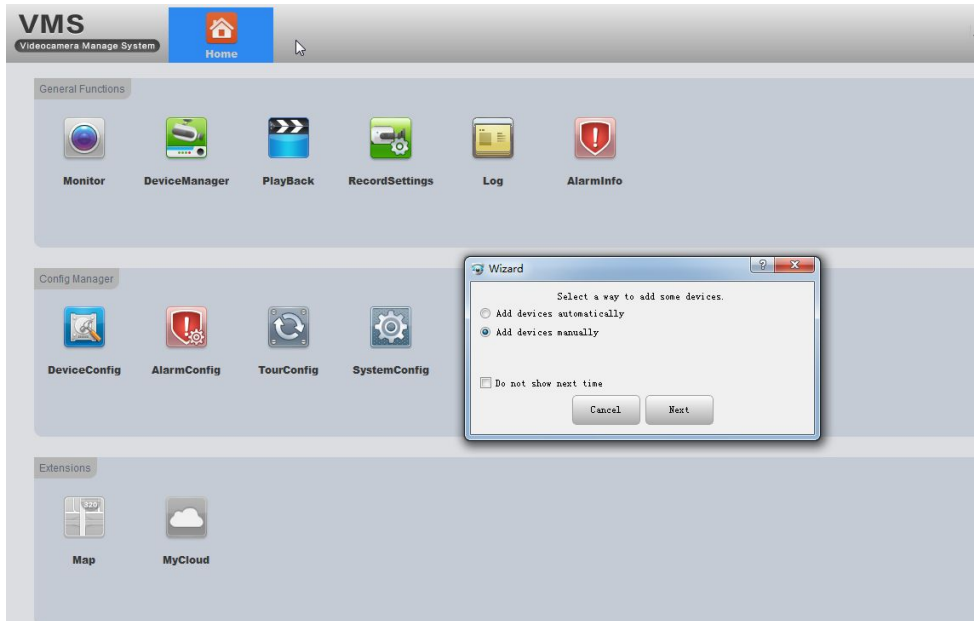


Input user name and password, click OK.

3.2 Wizard

There is a configuration wizard when you open the software for the first time. It is to select a way to add devices:

- | | |
|----------------------------|---|
| Add devices automatically: | auto add devices (in the same LAN) to VMS. |
| Add devices manually: | when you choose this way, you need to go to 'Device Manager' to add devices manually. |
| Do not show next time: | Tick it, this wizard won't show again |
| Next: | Click it, it will go to the 'Device Manager' page. |
| Cancel: | To exit the wizard |



3.3 Device Manager

- If you choose “add devices automatically” in wizard , it will come to this page and countdown to auto add devices.
- If you choose “Add devices manually” in wizard, you can either choose the discovered devices to add directly (as shown in the following picture) or you can click “Manual add” to add manually(See 3.3.3).

3.3.1 Search IP in LAN and Add

Has been discovered devices:

Name	CloudID	IP/Port	Vendor	Group	Status	peratio
10.10.200.223	c0d3fb97e9b84571	10.10.200.223:34567	XM	support	Offline	
10.10.200.222	eda302b57324625f	10.10.200.222:34567	XM	support	Offline	
10.10.200.153	6d674401dc12ad62	10.10.200.153:34567	XM	support	Offline	
10.10.200.149	2033a25dee685131	10.10.200.149:34567	XM	support	Offline	
192.168.3.100	985b7310f650b4f5	10.10.200.149:34567	XM	support	Offline	
192.168.1.11	6d674401dc12ad62	192.168.3.100:34567	XM	Default Gr...	Offline	
192.168.1.11	2033a25dee685131	192.168.1.11:34567	XM	Default Gr...	Offline	
192.168.1.10	441bcc93f0786878	192.168.1.10:8001	XM	Default Gr...	Offline	
192.168.1.10	6d674401dc12ad62	192.168.1.10:34561	XM	Default Gr...	Offline	
10.10.46.62	10c66695e5bb	10.10.46.62:34567	XM	Default Gr...	Offline	
10.10.45.61	23250f5a8c1c	10.10.45.61:34567	XM	Default Gr...	Offline	
10.10.44.30	2a2afd2b09e8f	10.10.44.30:34567	XM	Default Gr...	Offline	
10.10.43.39	a2e4555ef3f0c	10.10.43.39:34567	XM	Default Gr...	Offline	
10.10.43.32	9a57019933cb	10.10.43.32:34567	XM	Default Gr...	Offline	
10.10.43.26	17cc29cf4aaef	10.10.43.26:34567	XM	Default Gr...	Offline	
10.10.43.107	050f6893231e1	10.10.43.107:34567	XM	Default Gr...	Offline	
10.10.42.239	dc9fba2ea14d	10.10.42.239:34567	XM	Default Gr...	Offline	
10.10.41.18	e2237d4460f8d11	10.10.41.18:34567	XM	Default Gr...	Offline	
10.10.40.45	10000	10.10.40.45:34567	XM	Default Gr...	Offline	
10.10.40.31	4a8d999bef33492	10.10.40.31:47102	XM	Default Gr...	Offline	
10.10.40.11	c6dea8c51eeb799	10.10.40.11:34567	XM	Default Gr...	Offline	
10.10.39.46	8613db73cf3bb49	10.10.39.46:34567	XM	Default Gr...	Offline	
10.10.39.34	3a899a09851ebf34	10.10.39.34:34567	XM	Default Gr...	Offline	
10.10.39.20	9bd80018603ba75d	10.10.39.20:34567	XM	Default Gr...	Offline	
10.10.38.46	8d59d67cb430c439	10.10.38.46:34567	XM	Default Gr...	Offline	
10.10.38.14	39af5d032d771de4	10.10.38.14:34567	XM	Default Gr...	Offline	

Has been added devices:

Name	CloudID	IP/Port	Group	Status	peratio
10.10.200.12	8470bd6d90f49bd7	10.10.200.12:34567	Default ...	Offline	

double click ip/port, it'll pop up a box as it shows, you can modify the device's net config

Search Again

Manually added devices: Manual Add Add Group add new group

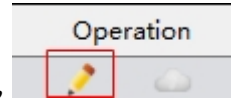
tick one or two devices in the left discovered list, click "Add" button, then it will be added to VMS (will show in the right added list)

tick one or two devices in the right added list, click "Remove" button, then it will be deleted from VMS (will disappear from the right added list)

this function is defaultly enabled.

In order to login device, modify ip automatically

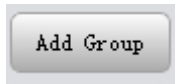
- Sometimes you may find that the device is in the left discovered list but you can't add it to VMS. This means that your device is physically connected in the LAN but its IP is not in the same network segment with your PC. You can either use the function 3----modify IP automatically(it will auto change your device's IP to the same segment with your PC), or you can manually modify the device's IP by double click IP/port in the left list(as shown in the above picture).



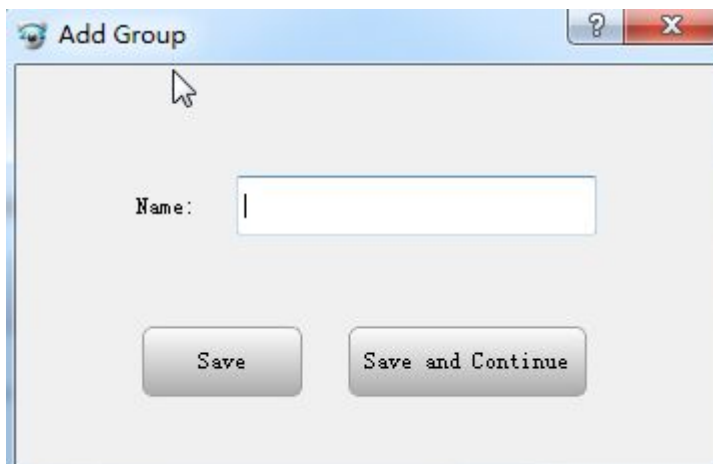
- If you want to add the discovered devices by Cloud ID, click this icon, choose login type: by IP/Domain or by Cloud ID.

3.3.2 Add Group

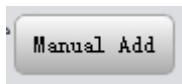
If you have many devices , you'd better divide them into different groups .



click this button to add new group. The interface is as follows:

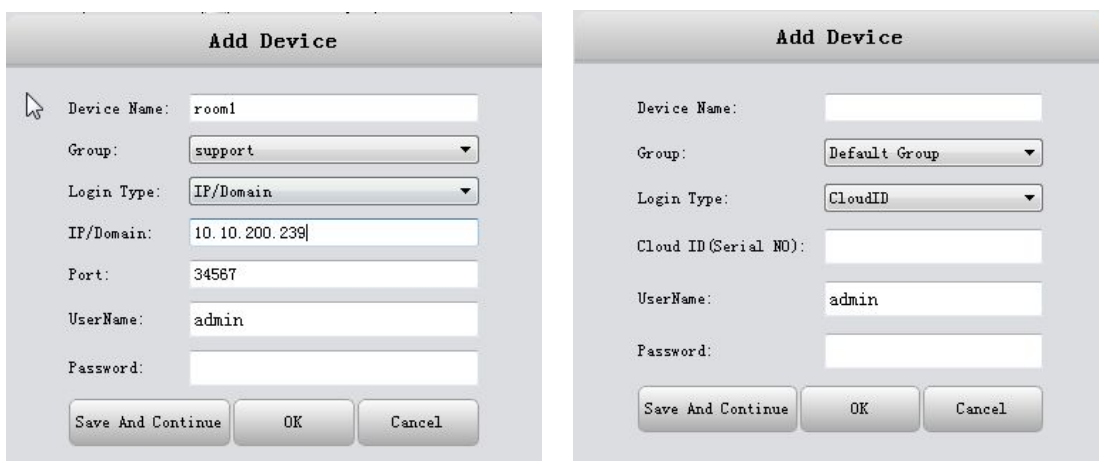


3.3.3 Add devices manually



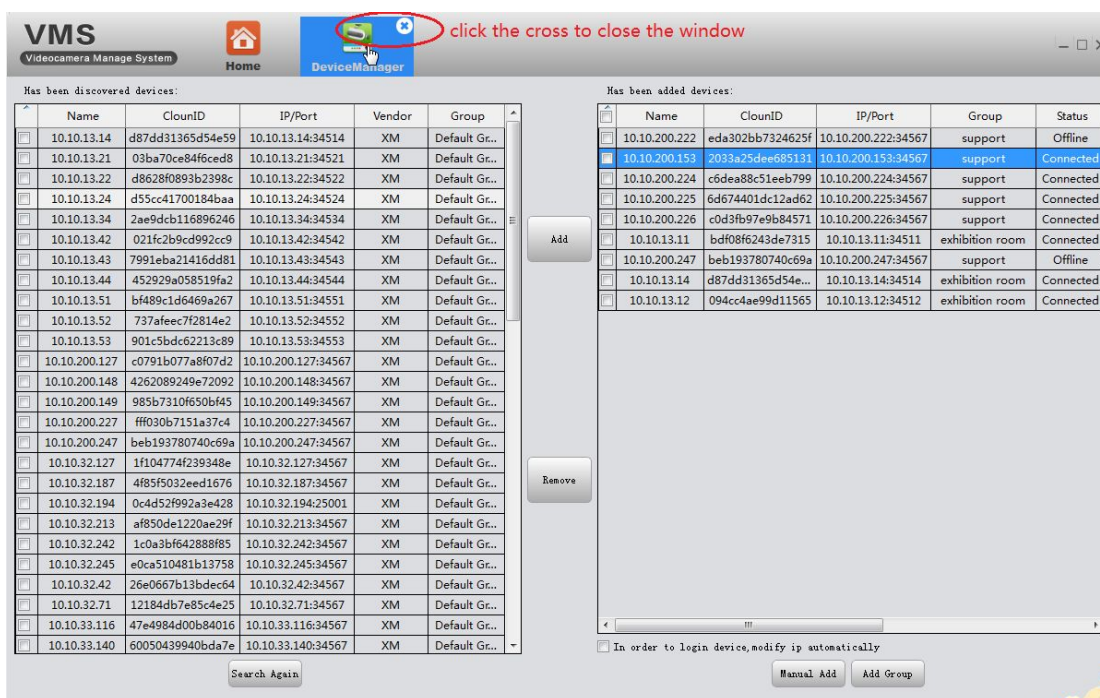
click this button to add device manually. The interface is as follows:

Device name:		Edit a name for the device to identify different devices easily.
Group:		select a group for this device
Log-in Type:		Choose a way to add device,by IP/Domain or by Cloud ID
By IP/Domain	IP/Domain	Device's IP/Domain
	Port	Device's TCP port
By Cloud ID	Cloud ID(SN)	Device's Cloud ID(Serial Number)
User name, Password		Device's Username and password



- If you need to add more than one devices , please Click ‘Save and Continue’, then you can add continuously.
- If you only need to add one device, please click ‘OK’.
- If you don’t want to add, please click ‘Cancel’.



3.3.4 Close window



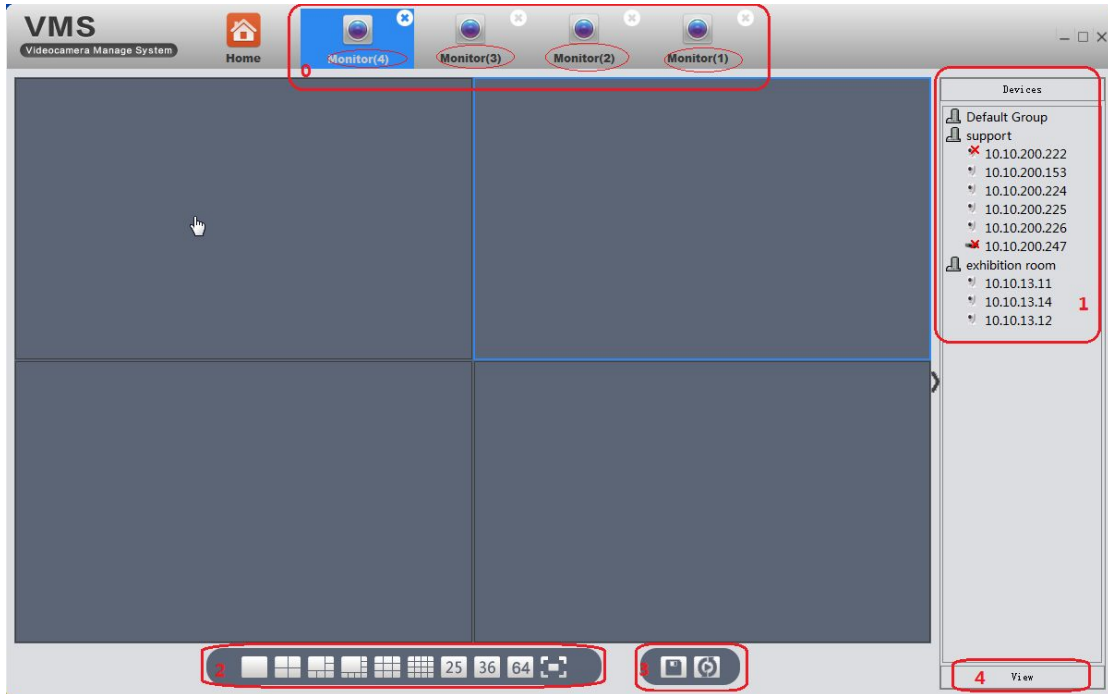
Click the cross to close the window(as shown in the above pic).

3.4 Monitoring

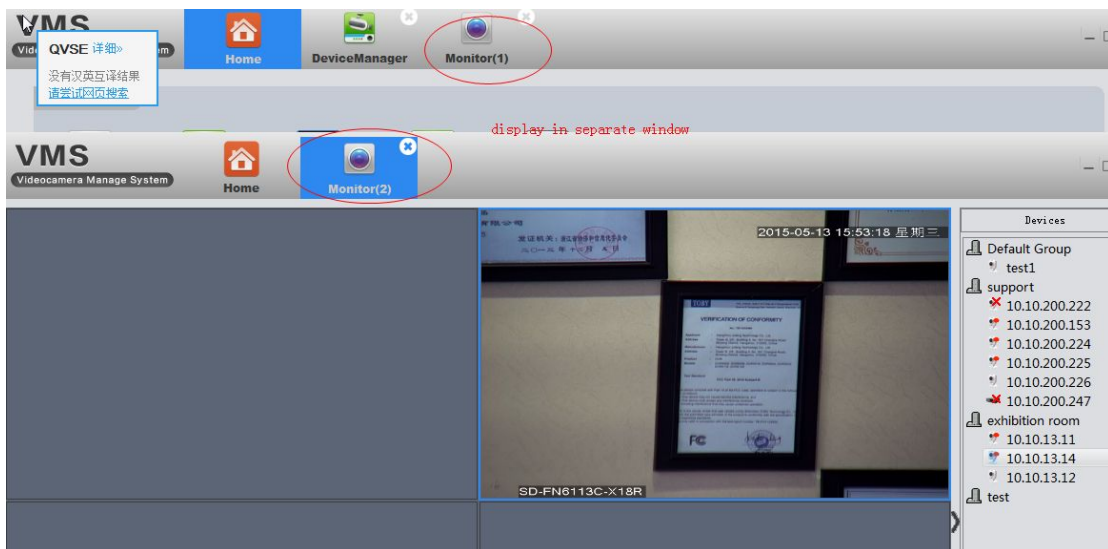
1	Devices list. You will find all the devices you added, arranged in groups. Display devices’ name and device status, the red cross means the device is not online
---	--

2	Support 1/4/6/8/9/16/25/36/64 split. Support Maximize window
3	 save view  tour(see 3.11)
4	View(see 3.4.1)

✧ There will be description when you put mouse on the icon




✧ VMS support up to 4 windows at same time(0). Click and drag, each can be dragged out into a separate window. This is very convenient for multiple screen monitoring. Each window can see 64 channels at most, $64*4=256$. So, in theory, you can see 256 at most. As said in overviews, the actual preview number is limited by the properties of the server, the resolution of devices (bit rate), network bandwidth etc.

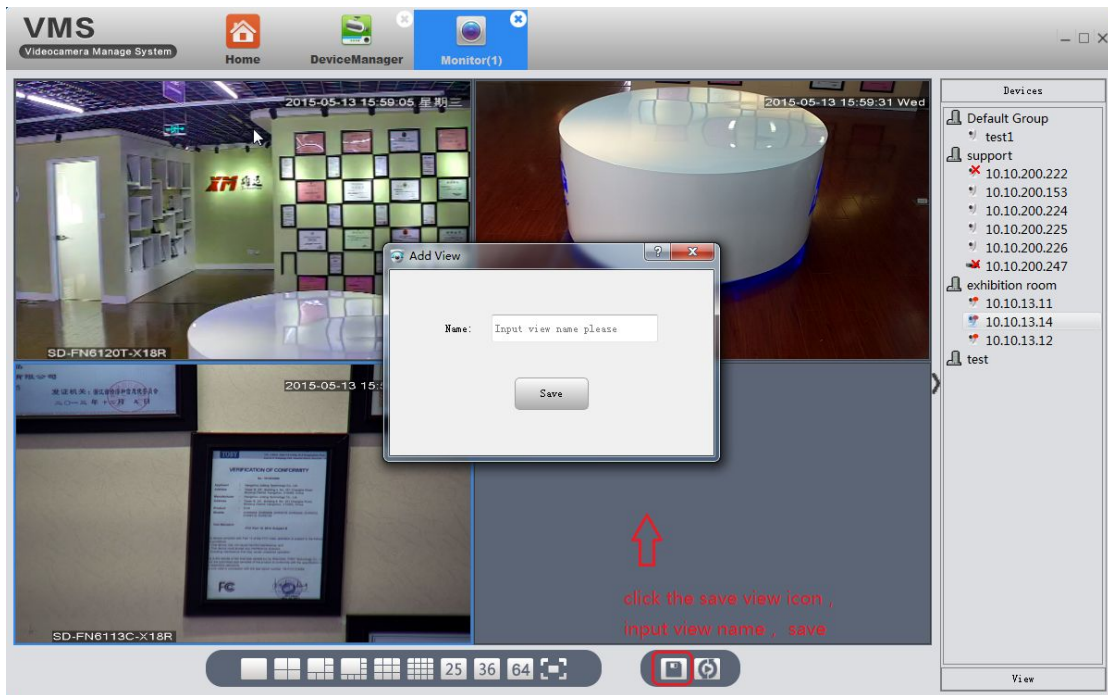


3.4.1 View

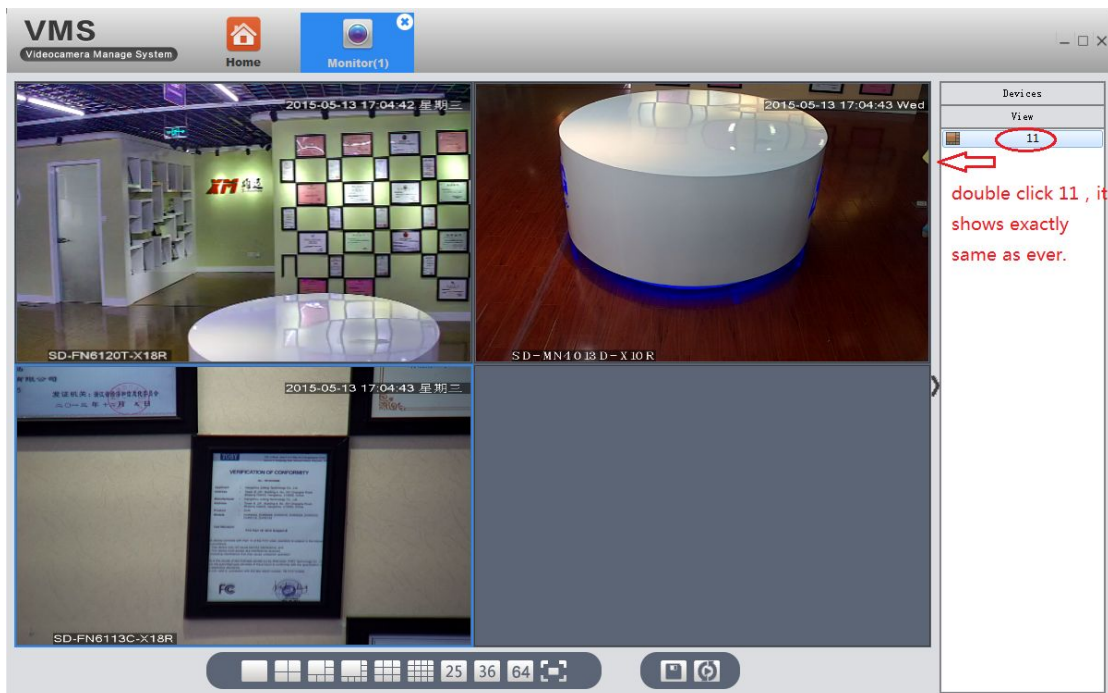
Double click the device name in the right list, or right click to choose main/extra stream to connect real-time video. If you wanna the VMS remember the view, please

click 'save view' icon , save the current view. For example:

Firstly, I connect the devices as the following pic shows, then I save that view as 11.

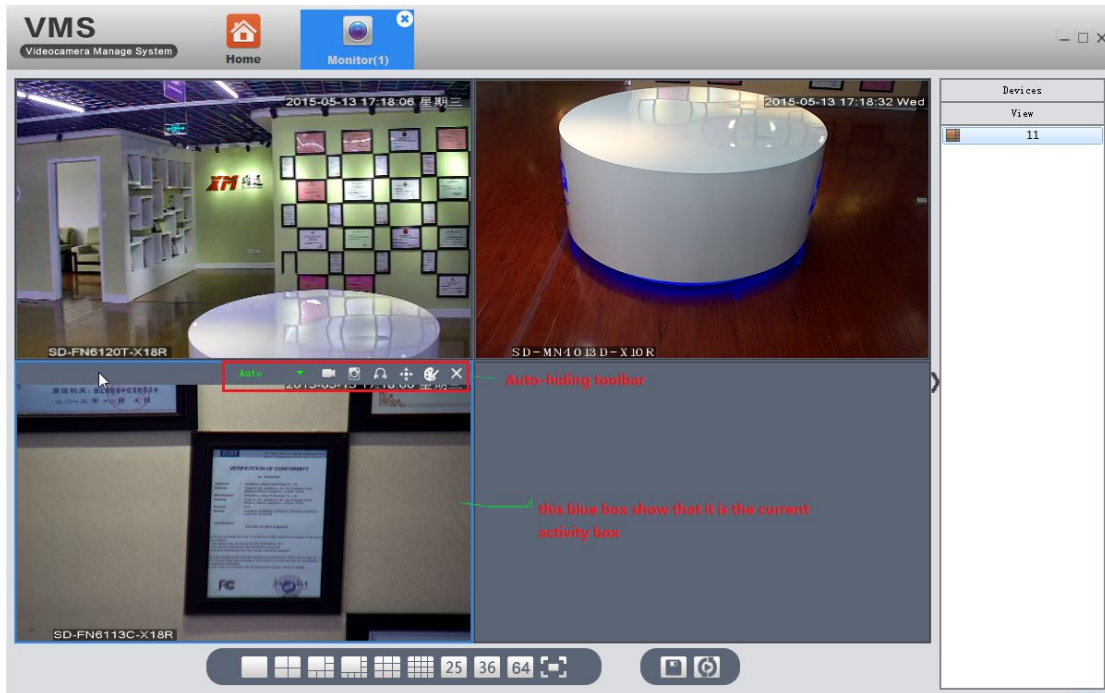


next time, I don't have to connect one by one again, just need to double click the saved view 11. And it will show exactly same as ever.



3.4.2 other features

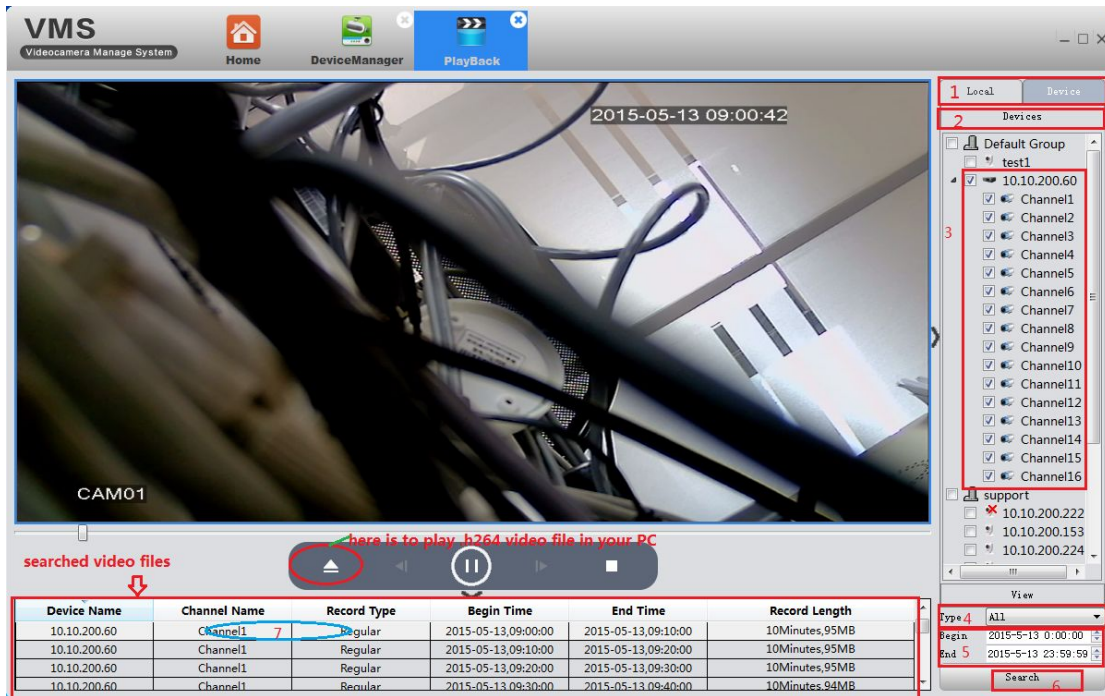
Put mouse on the top of current activity box, the auto-hiding toolbar will appear.



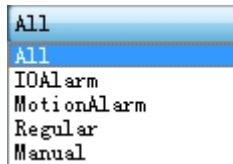
	<p>Choose display scale, auto resize turned on by default.</p>
	<p>Temporary manual record</p>
	<p>Instantaneous screenshots</p>
	<p>Click to enable audio</p>
	<p>Adjust the color of video on VMS, Not of the device.</p>
	<p>Disconnect the video</p>

3.5 Playback

Click Playback icon in main interface.

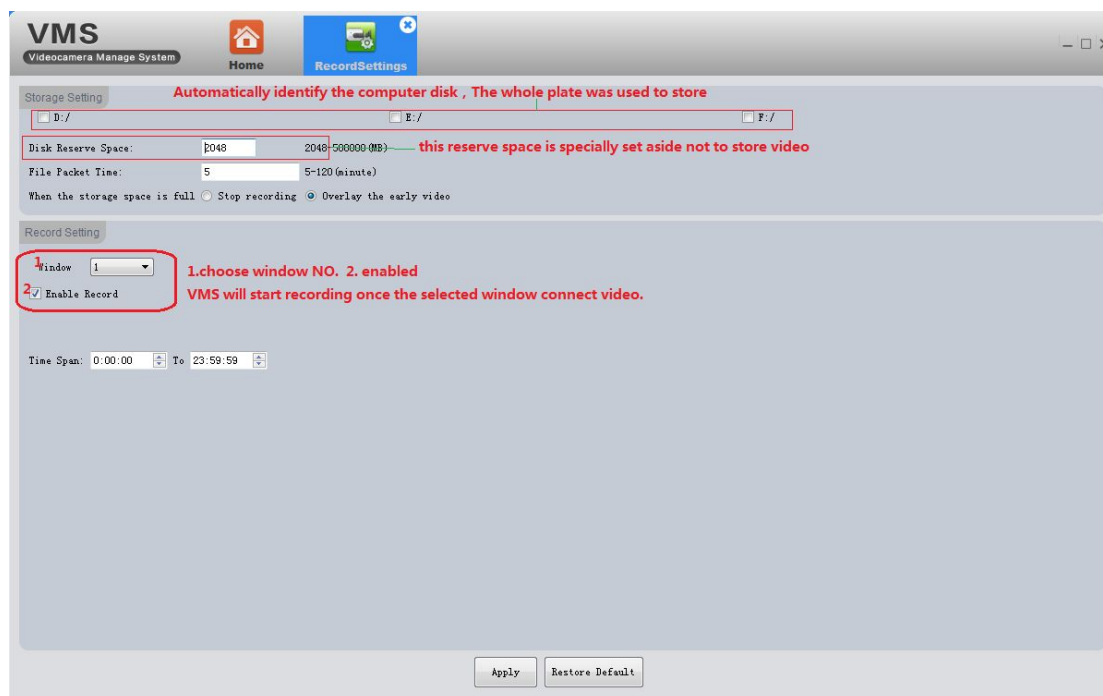


- Step 1: Choose local(PC) or devices according to where the video is stored.
- Step 2: It shows the selection result in step 1.
- Step 3: Choose query objects, from a group ,a device to a specific channel of a DVR.



- Step 4: Choose video type
- Step 5: Choose date and time
- Step 6: Click Search
- Step 7: All video files that conform with search criteria are displayed at bottom left. Double click any file, start to play.

3.6 Record Settings



3.6.1 Storage settings

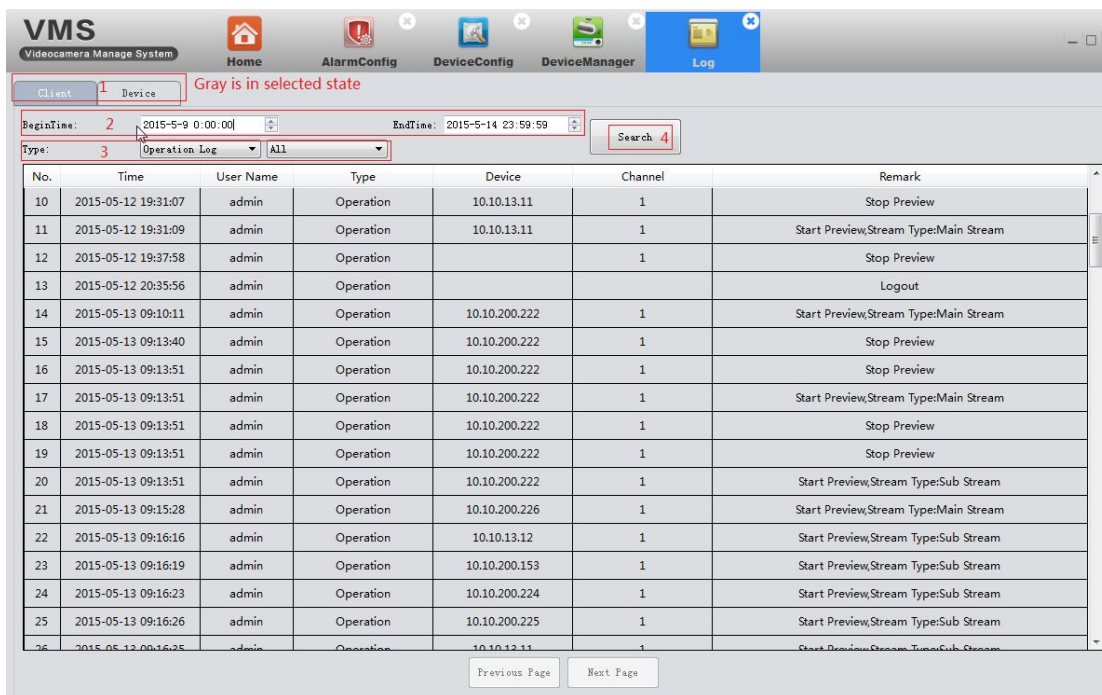
- Automatically identify the PC disk. The whole disk is used for storing.
- The disk reverse space is specially set aside not to store video

3.6.3 Record settings

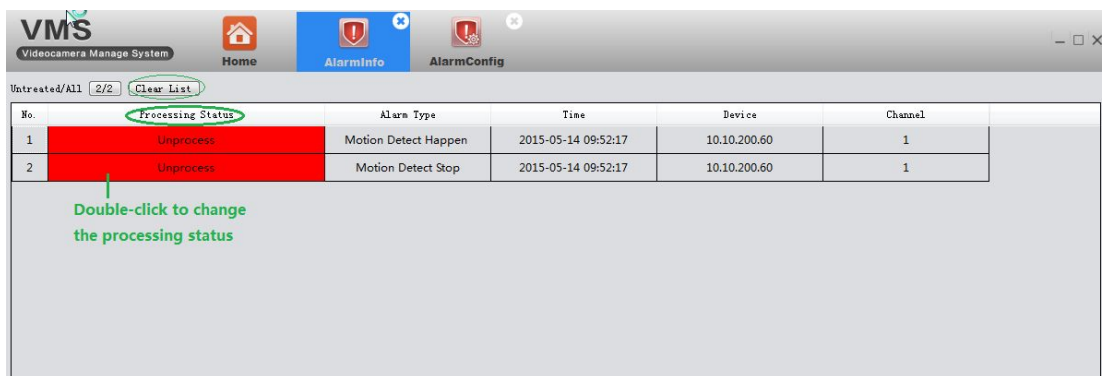
1. Select window
 2. Tick enable
 3. Click Apply to save
- VMS will start recording once the selected window connect video.
- Restore default---reset all record settings of VMS.

3.7 Log

On this page, you can search the operation Log of the client and device.



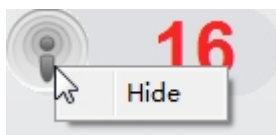
3.8 Alarm info



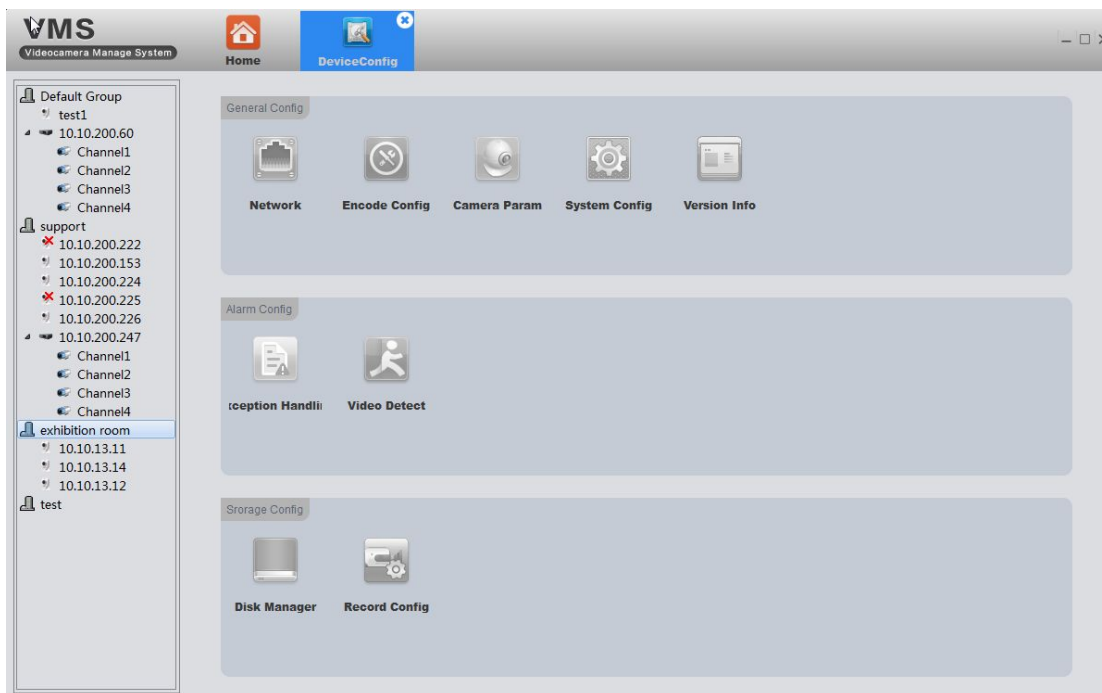
It shows all alarm info detected by VMS .

Red marks mean unprocessed. Double-click to change the processing status.

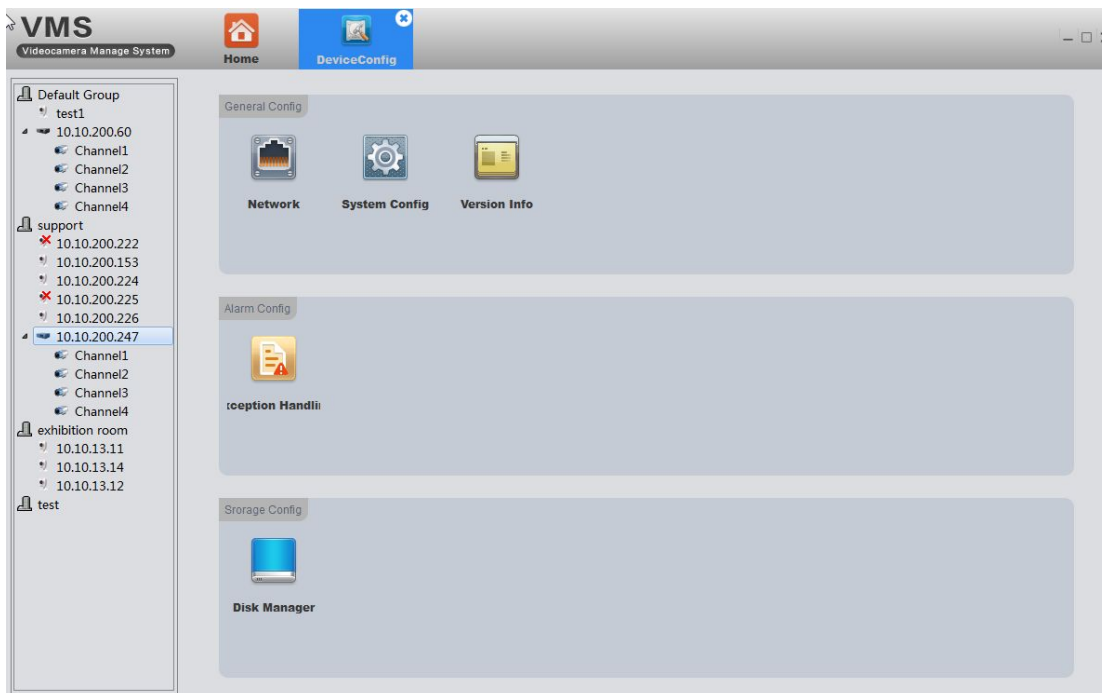
- ❖ When VMS is running, you will find an alarm message floating window at the top right corner. You can click to read the alarm message or right click to hide it.
- ❖ If you wanna VMS show alarm prompt, you must enable the alarm features both on device(see 3.9.7)and VMS(see 3.10)



3.9 Device Config



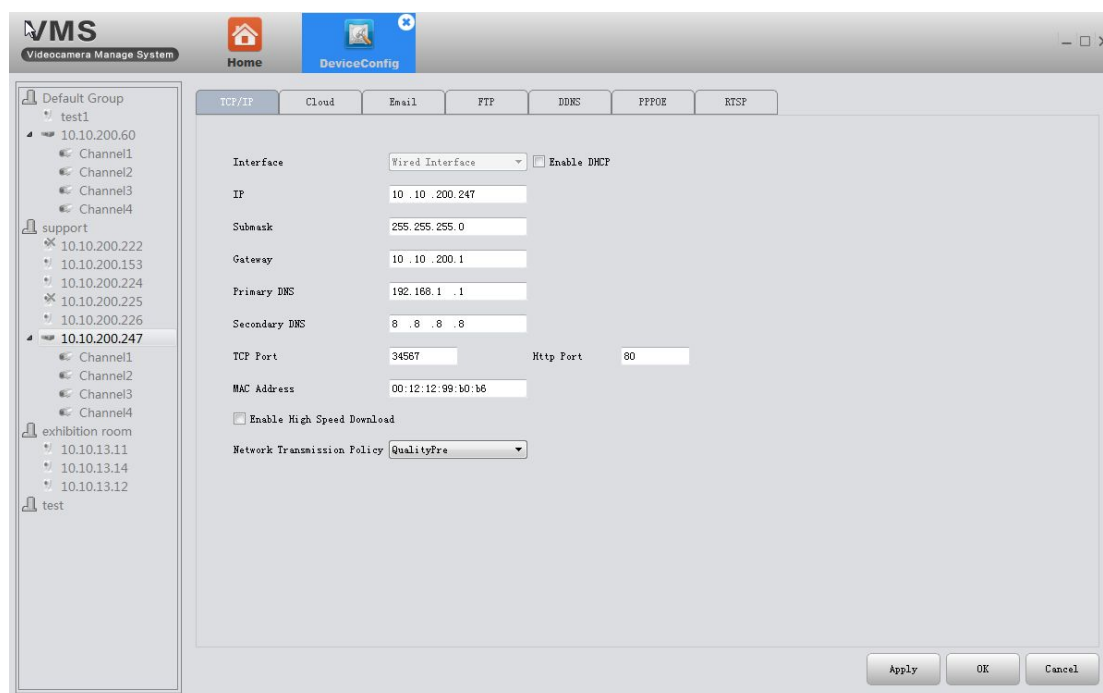
- All icon is gray before you choose a device. It will show the corresponding function-option according to the device type you choose.
- Full function-option for IPC(as shown in above pic).
- For NVR, there is no Encode and Camera Parameters as the following pic shows.



Click on the corresponding function to set and operate .

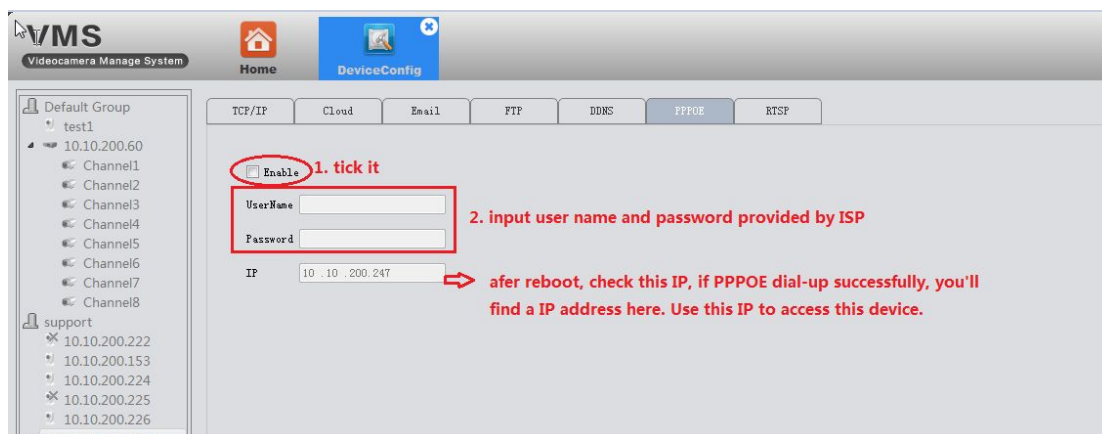
3.9.1 Network

3.9.1.1 Set device's IP



3.9.1.2 PPPOE

- 1) Why: Device can build a connection with internet based on PPPOE.
- 2) How:
 - ① the cable connected to device's Ethernet port must support PPPOE;
 - ② plug-in cable, then input user name and password provided by ISP.



- ③ Reboot the device.

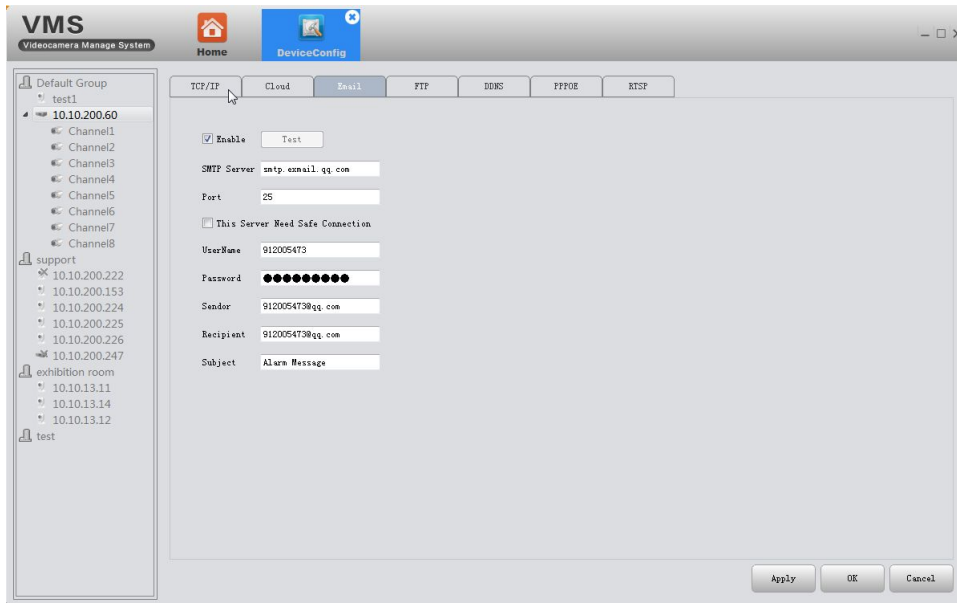
3.9.1.3 Email

- 1) Why: with necessary parameter settings, the device will send alarm information and snapshot picture to appointed mailbox.

2) How:

① Before you use email, make sure your device is connecting with internet(that's because the device need to connect to the mailbox server)

② Email configuration, as the following pic shows:



③ Click test, if it show success, please go to mailbox to check whether you get the test mail.

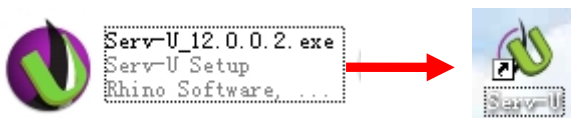
3.9.1.4 FTP

1) Why: FTP is available only when alarm happens,it can upload related record files and snapshot pictures to FTP server.

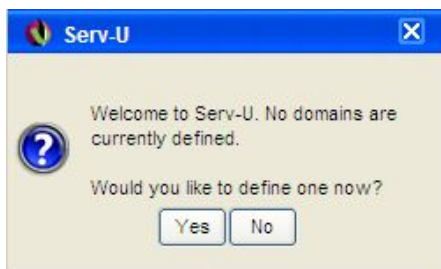
2) How:

➤ You need to build a FTP server first if you don't have a ready-made FTP server . Here is a way to build a FTP server by Serv-U software.

a. Install the Serv-U software



b. After installing the software,it will appears the step wizard which help you to define the domains and users,see as follow pic:



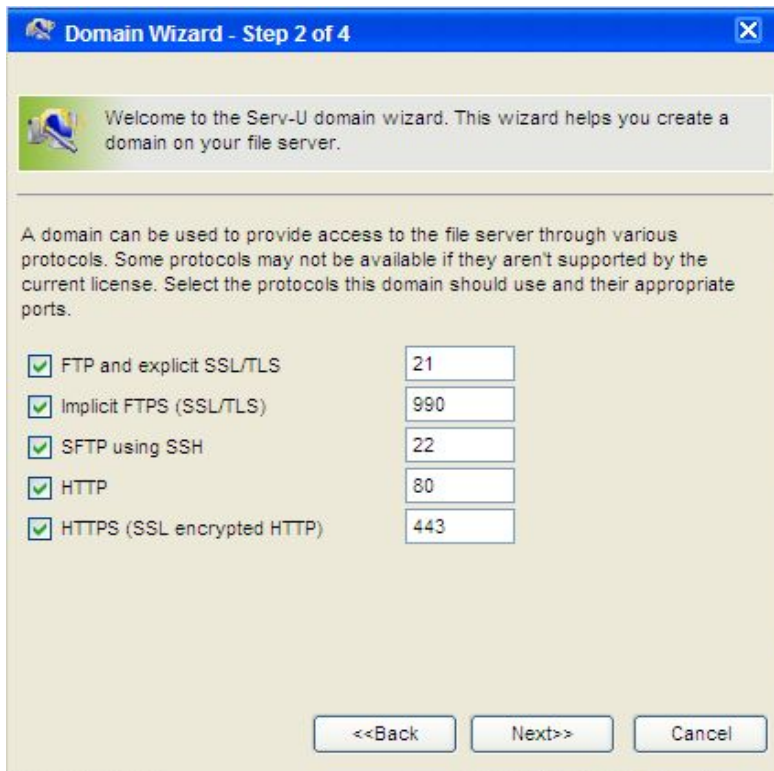
pic 1

Click "Yes", enter the next setting interface, see as pic 2



Pic 2

Input name and description, click "Next"



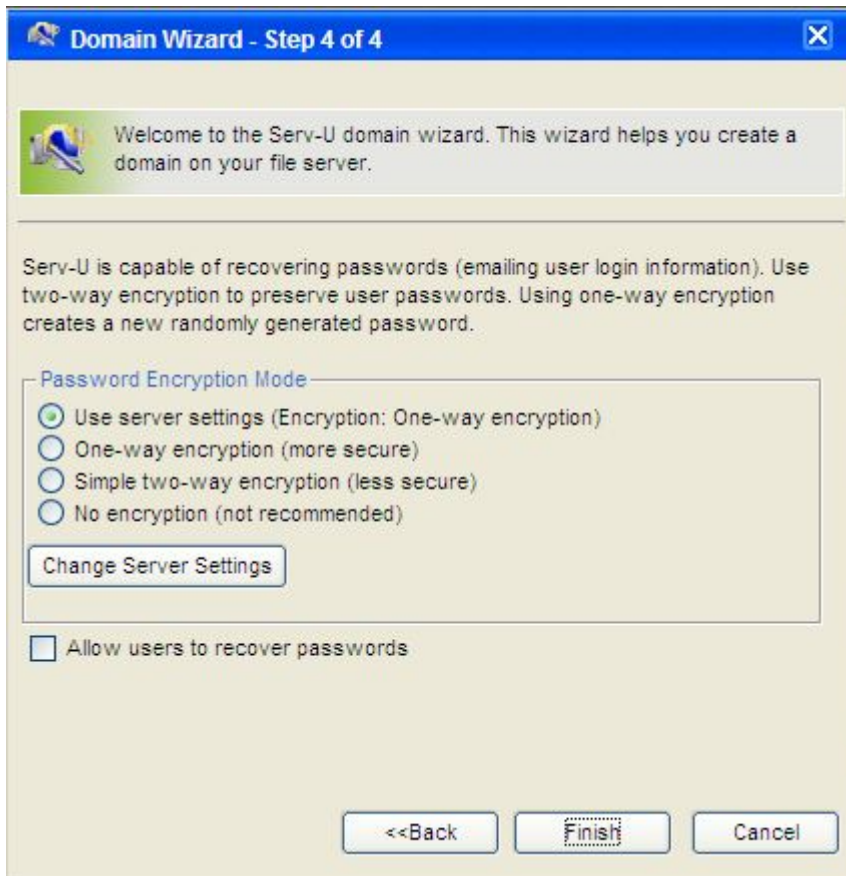
Pic 3

Click "Next", and see as pic 4. Choose your PC's IP as the built domain's IP from the drop-down box.



Pic 4

Click"Next"



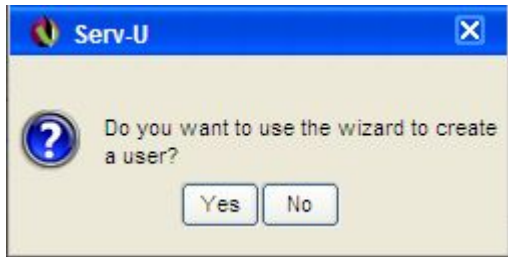
Pic 5

Click"Finish",the domain already had been defined,next step wizard will help you define users



Pic 6

Click"Yse",it will appears a tip,see as pic 7



Pic 7

Click"Yse",enter the user wizard step 1



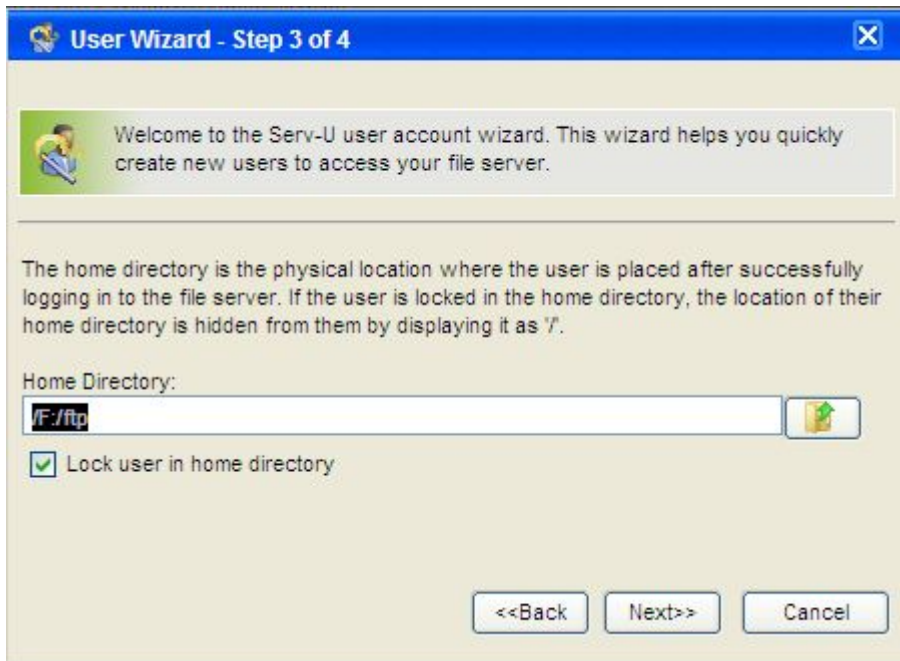
Pic 8

Input Log-in ID,Full name,Email Address messages,and click"Next"



Pic 9

Click "Next"



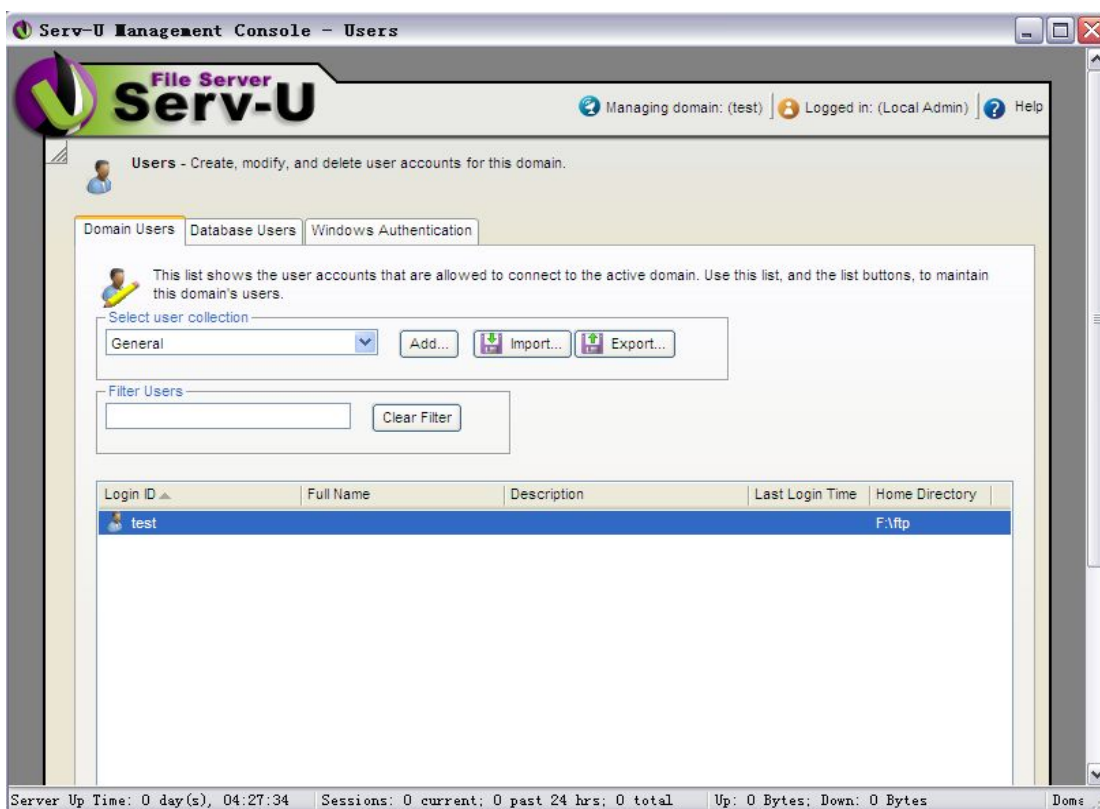
Pic 10

Setting the home directory, and click "Next"



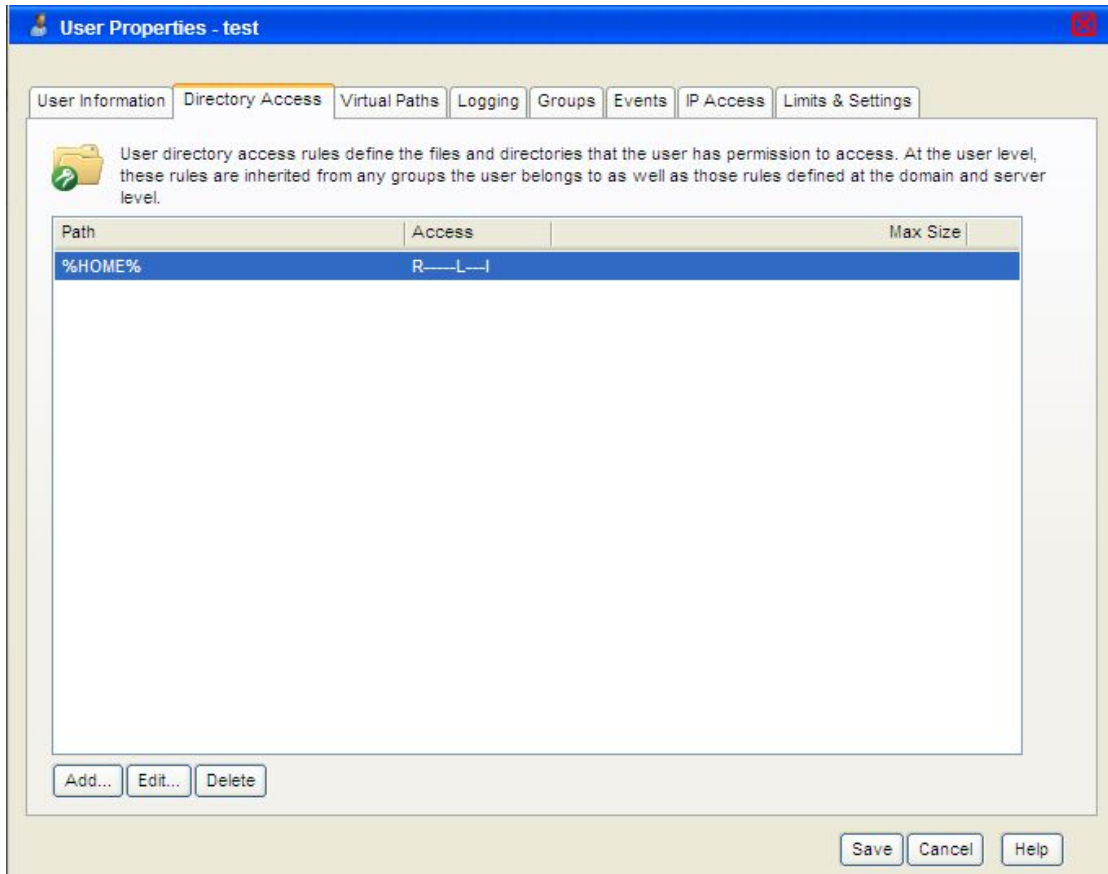
Pic 11

Click "Finish". you had defined users. next will be the following interface



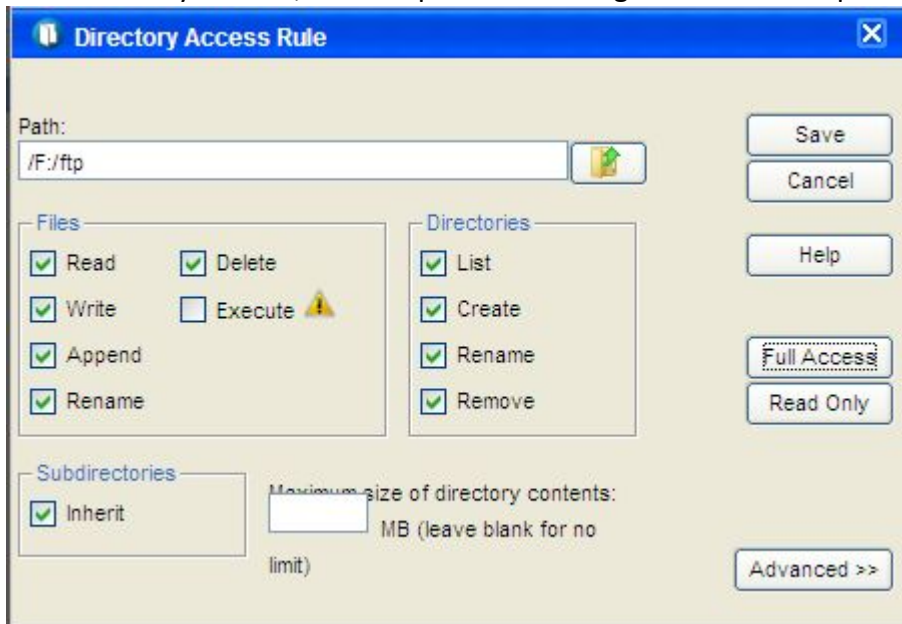
Pic 12

Click log-in ID test, setting directory, see as follows pic 13



Pic 13

Find "directory access", click the path and setting it. see as follow pic14



Pic 14

Click "save". After finishing all above setting steps, we already had setted the FTP server.

- FTP settings of device



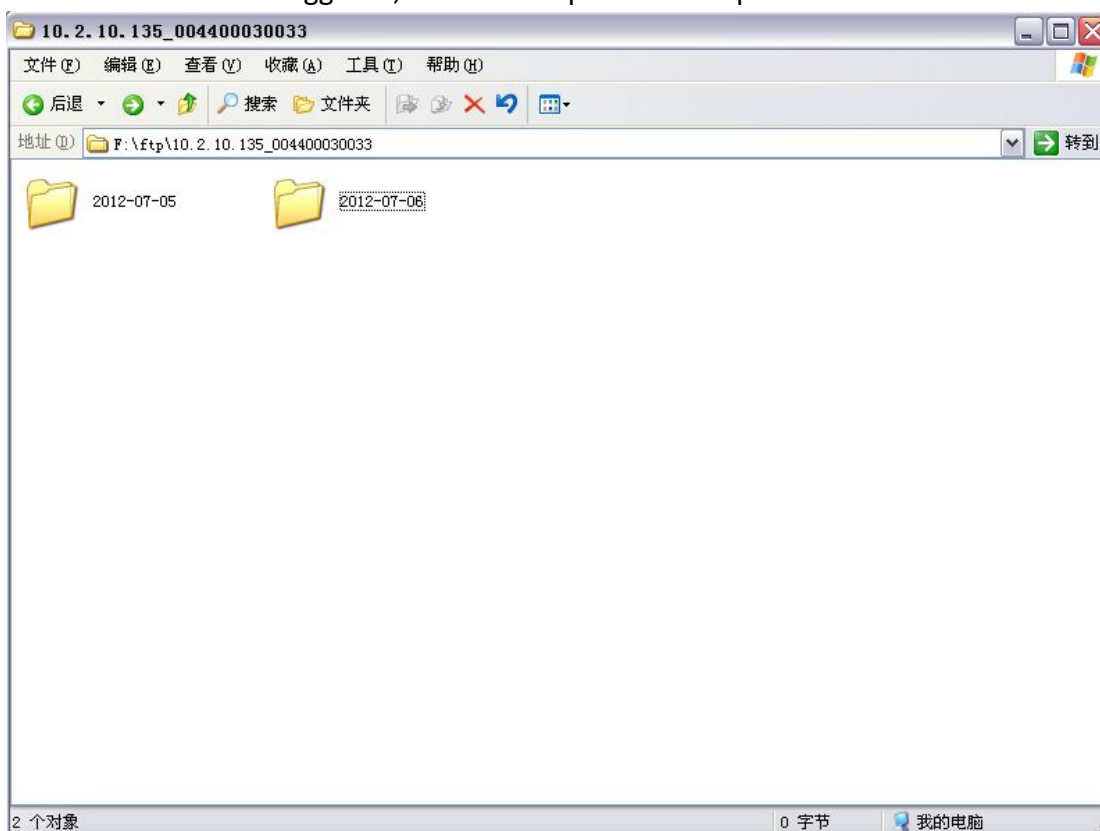
Pic 15

The server Address is the IP of the PC where you built the FTP server.

The user name and password are the same as ftp service settled.

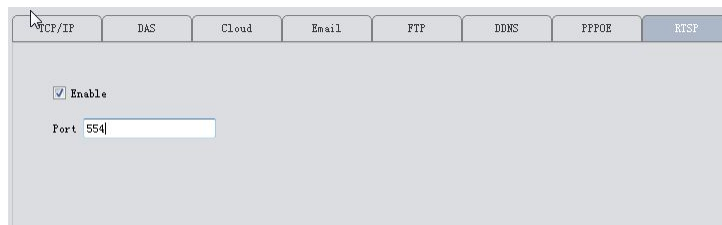
- ❖ one more thing:make sure the network between your device and FTP server is connected.

➤ when the alarm triggered,the file will uploaded to ftp.



3.9.1.5 RTSP

- 1) Why: This service is needed when you use Non IE kernel browser(such as Safari, Google Chrome, Foxfire, Opera etc.) to access device.
- 2) How: this service is default enabled, as follows,



3.9.1.6 Cloud

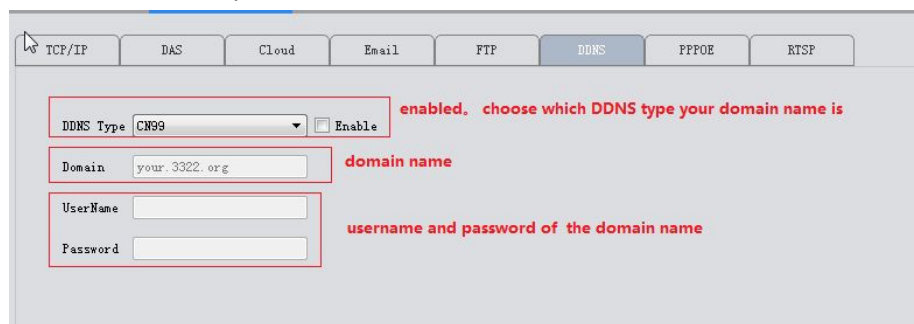
The cloud service is also default enabled. As long as your device’s network is connecting the Internet ,you can easily use the Cloud ID to remotely access your device without complicated settings like port forwarding.



3.9.1.7 DDNS

DDNS: Dynamic Domain Name Server.

- a. First you need an available domain name . Our device default support five DDNS type :CN99/DynDns/Oray/NO-IP/MYQ-SEE.
- b. On this page, binding the domain name with your device. Forwarding HTTP and TCP ports of this device in your router. Then you can use the domain name and HTTP port to web access device, or use domain name and TCP port to access device via PC/mobile client.



3.9.1.8 DAS

DAS: it will auto put your device registered to Myeye server(our platform software

which is used for central management of a large quantity of devices. See details in Myeye manual)

The screenshot shows the 'DAS' configuration tab in the VMS interface. It includes an 'Enable' checkbox and several input fields with red annotations:

- SerialNO:** 123456. Annotation: **this serial NO. is used for myeye server to identify this device. Edited by yourself.**
- Server Address:** 218.72.73.38. Annotation: **myeye server's address. must connected with this device**
- Server Port:** 9400. Annotation: **Listen port of myeye ARS server. the default is 9400**
- UserName:** admin. Annotation: **device's username and passport**
- Password:** [masked].

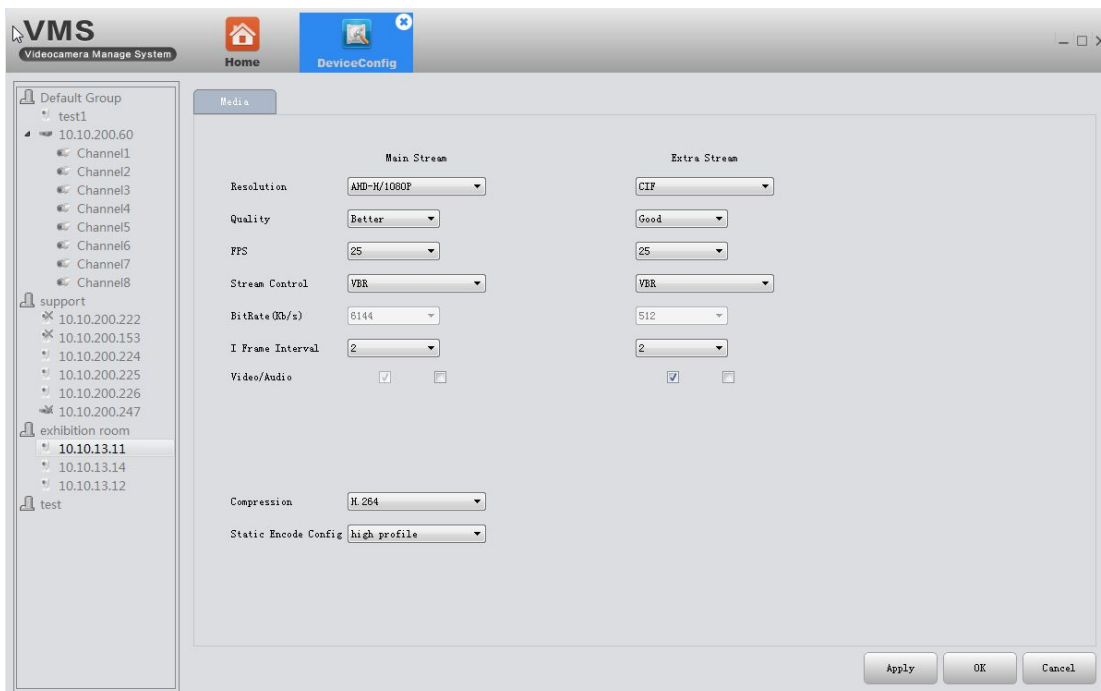
Config in myeye server

The screenshot shows the 'web server' interface for Myeye server, version 3.0.0.4. The navigation menu on the left includes 'Operation Setup', 'System Setup', 'Running Status', and 'Local Operation'. The main content area is titled 'Operation Setup -> Device management -> Detailed information' and contains the following configuration fields with red annotations:

- Device ID:** 3301061000003. * Auto number
- Belongs to:** [dropdown menu]. *
- Device type:** Auto-Register. Annotation: **choose auto-register**
- serialNum:** [input field]. Annotation: **the serial NO you edit on device's DAS page**
- Device name:** [input field]. *(20 characters)
- Device IP:** 10.10.48.178. Annotation: **server's address**. *Please input the host name if you are using DDNS.
- port:** 9500. Annotation: **client port of Myeye's ARS server**
- Channel amount:** 0. *
- Channel setup:** [input field]
- Alarm amount:** 0. *
- Alarm setup:** Please input the alarm amount first and then set alarm channel.

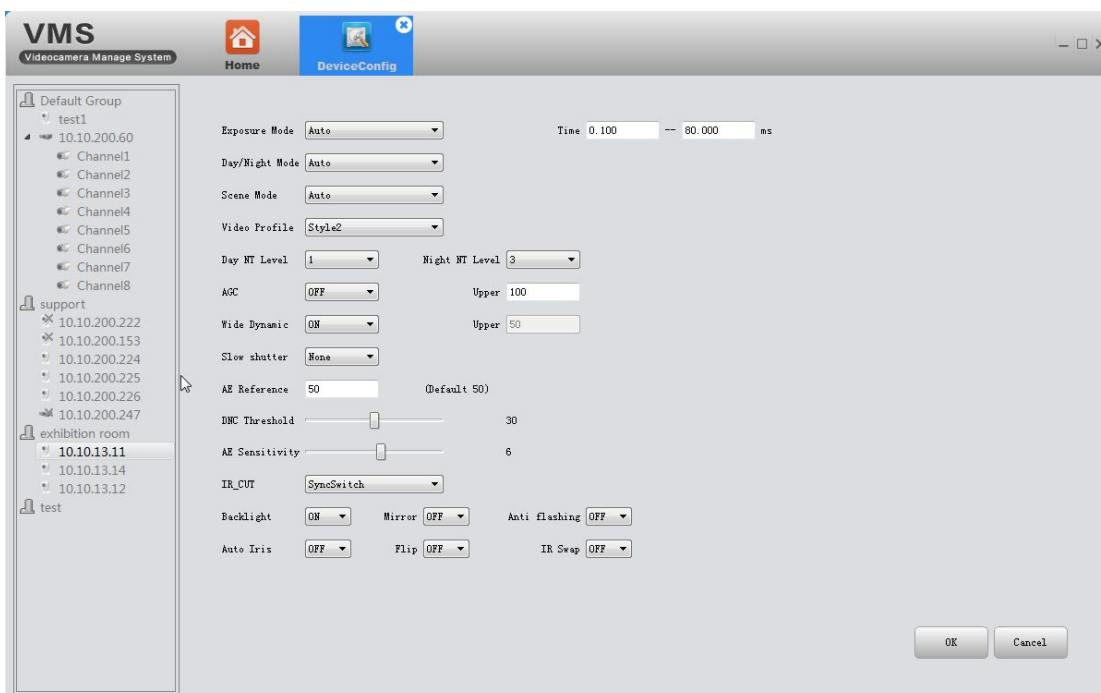
Buttons for 'OK' and 'Cancel' are located at the bottom of the form.

3.9.2 Encode



Set video/audio encode parameters of DVR /IPC. All our devices support dual stream: main stream and extra stream. You can choose adaptive resolution, FPS, quality and so on according to your needs.

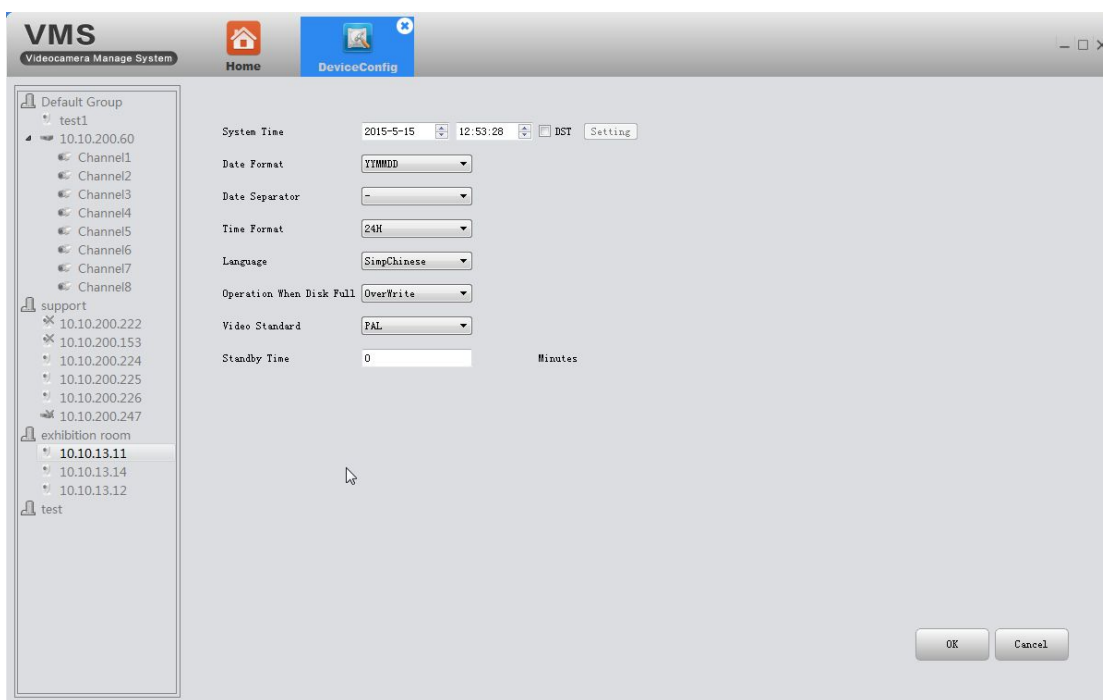
3.9.3 Camera parameters



Here to modify IPC parameters, including Exposure mode, Day/Night mode, Day NT level, wide dynamic, AE reference, AGC, backlight comprehension, slow

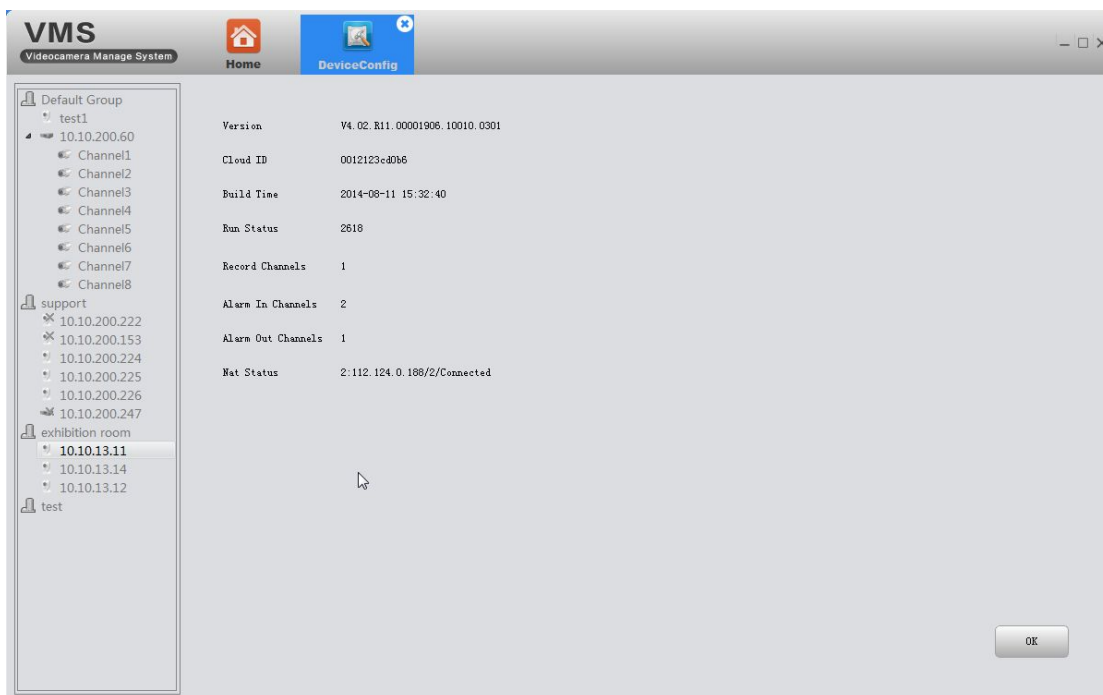
shutter, IR_CUT swap, Flip, mirror, anti-flicker , Auto iris,etc

3.9.4 System



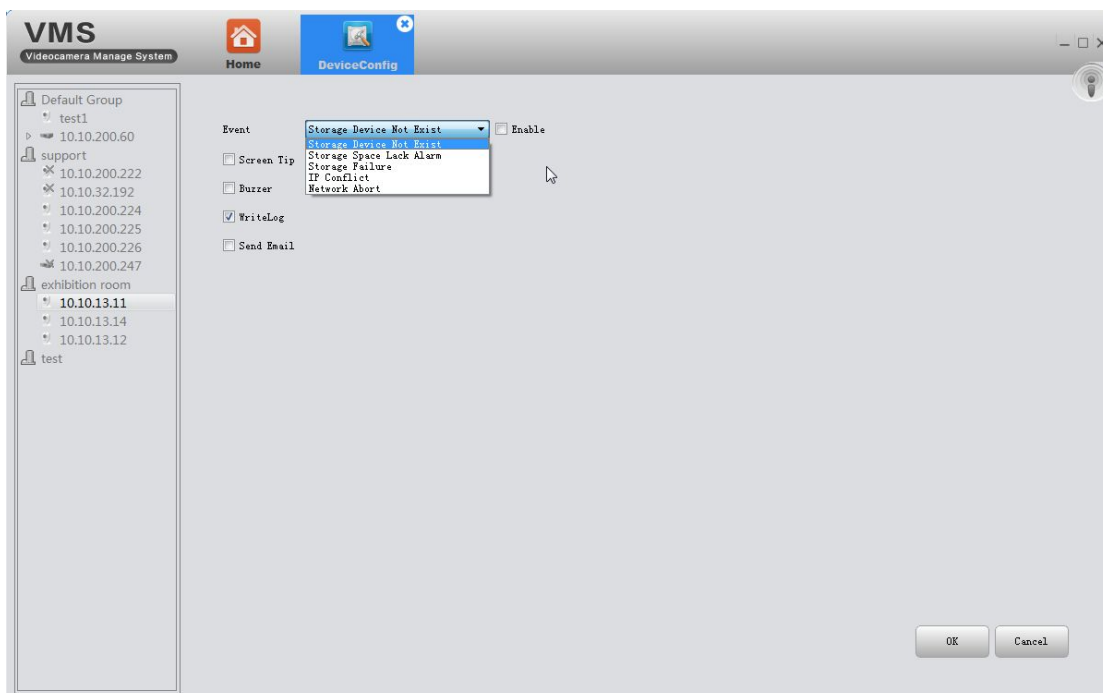
Here to modify device's time ,language, operation when disk is full.

3.9.5 Version info



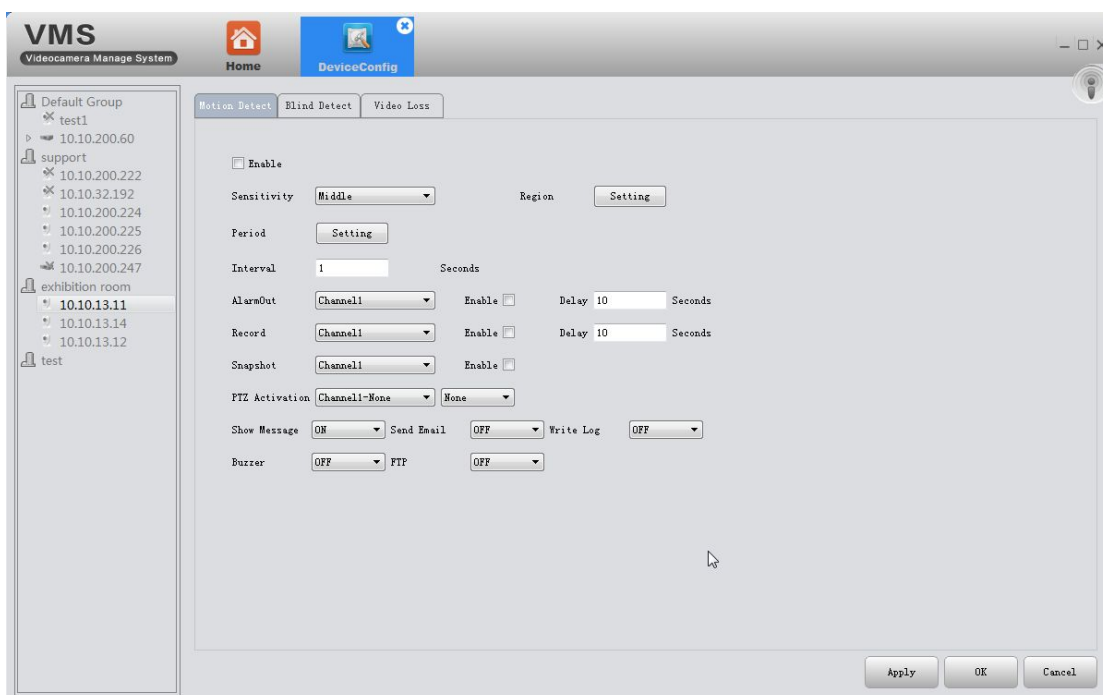
Display the basic information such as hardware information, firmware version, built date , serial No. and so on.

3.9.6 Exception handling



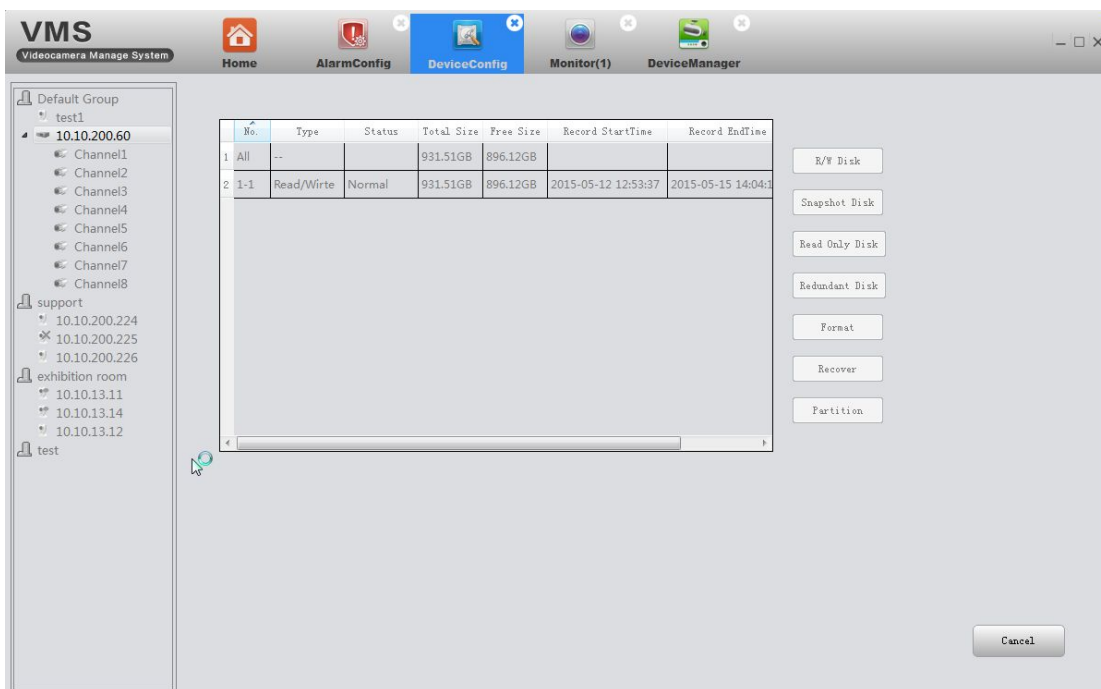
Choose event type from the drop-down box, and tick alarm type you want. The alarm info will be recorded in device's Log if you tick Write log. And if you want it to send alarm message to your mailbox, make sure the email is successfully set(see 3.9.1.3)

3.9.7 video detect

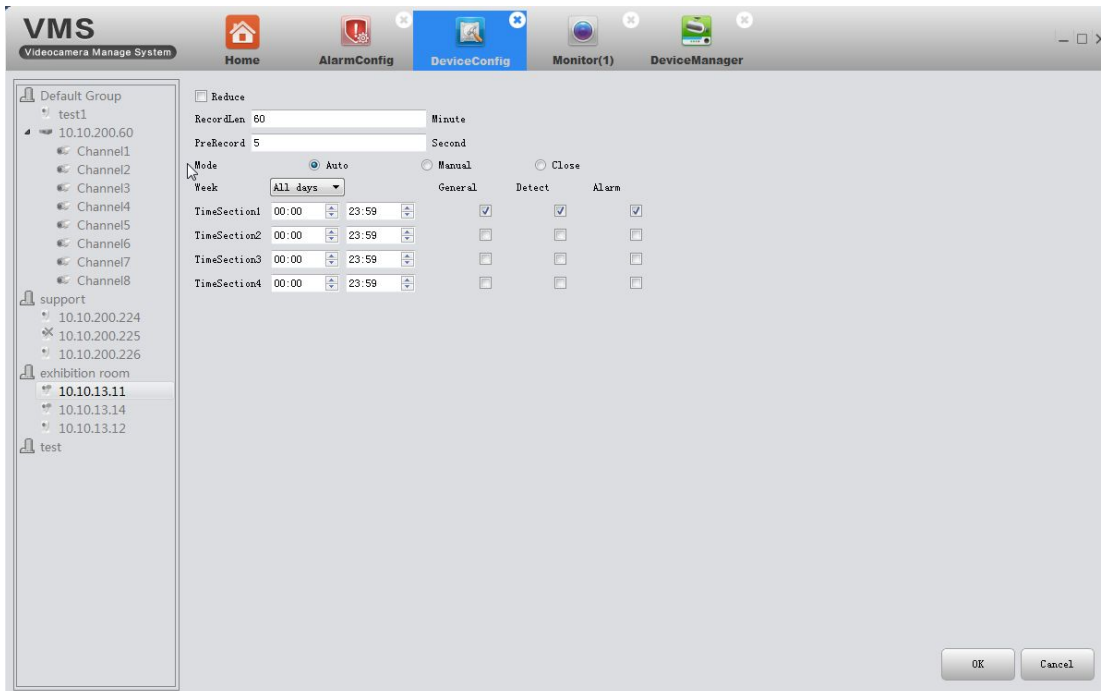


Including motion detection, blind detect, video loss.

3.9.8 Disk manager

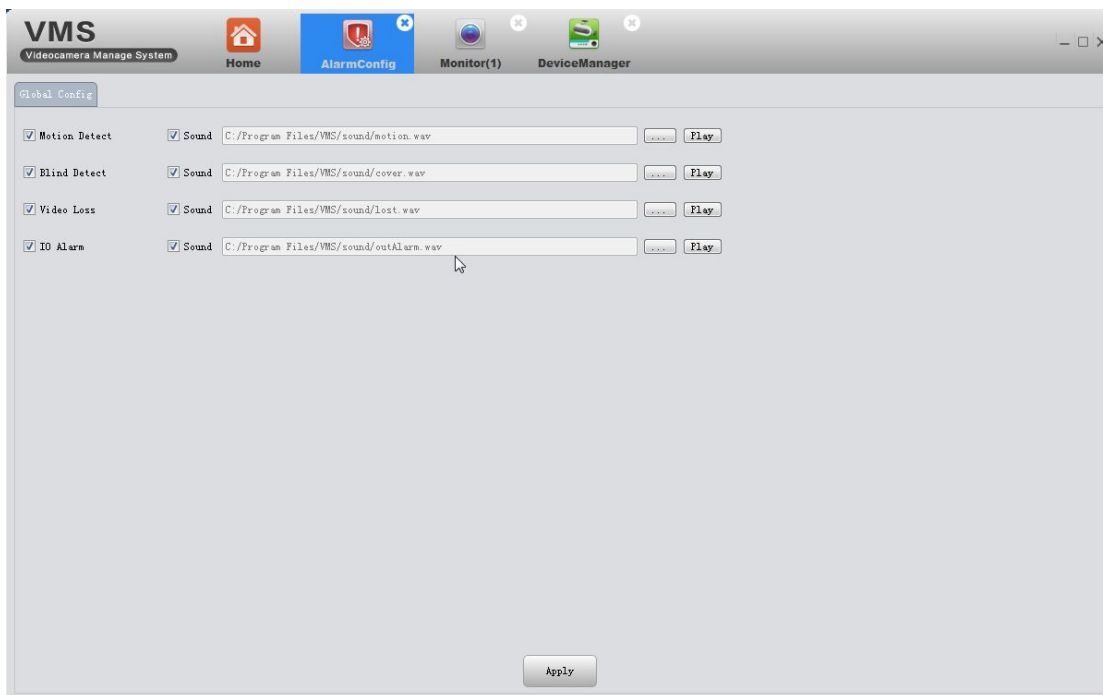


3.9.9 Record config



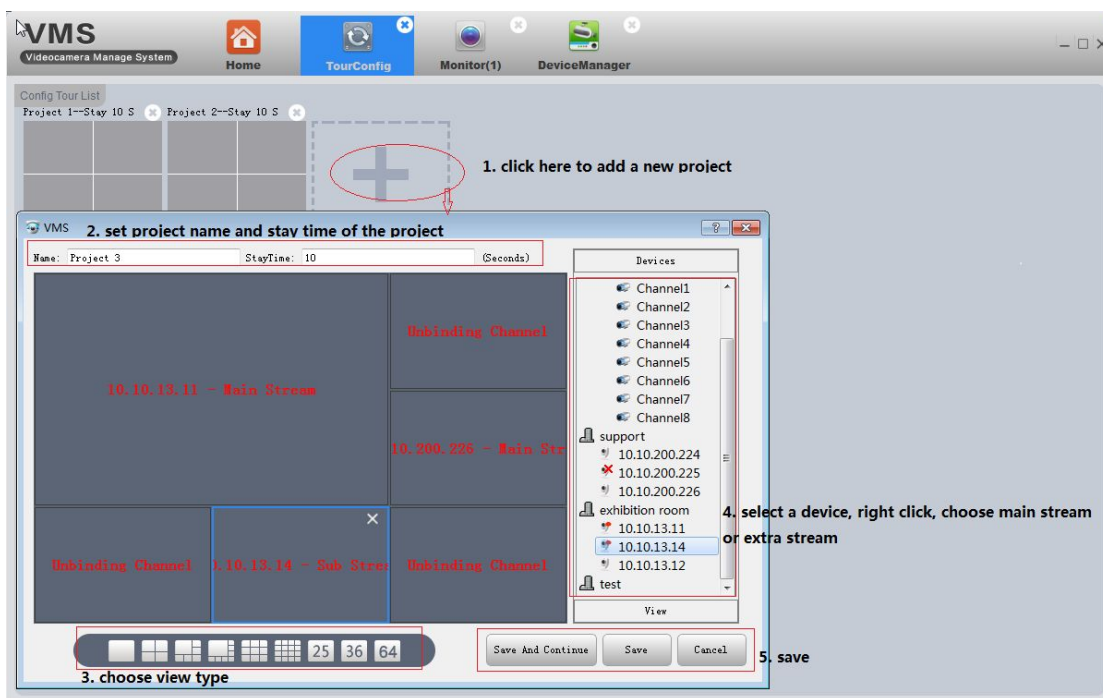
3.10 Alarm config

Alarm Config of VMS. You can set different prompt sound when alarm triggered.



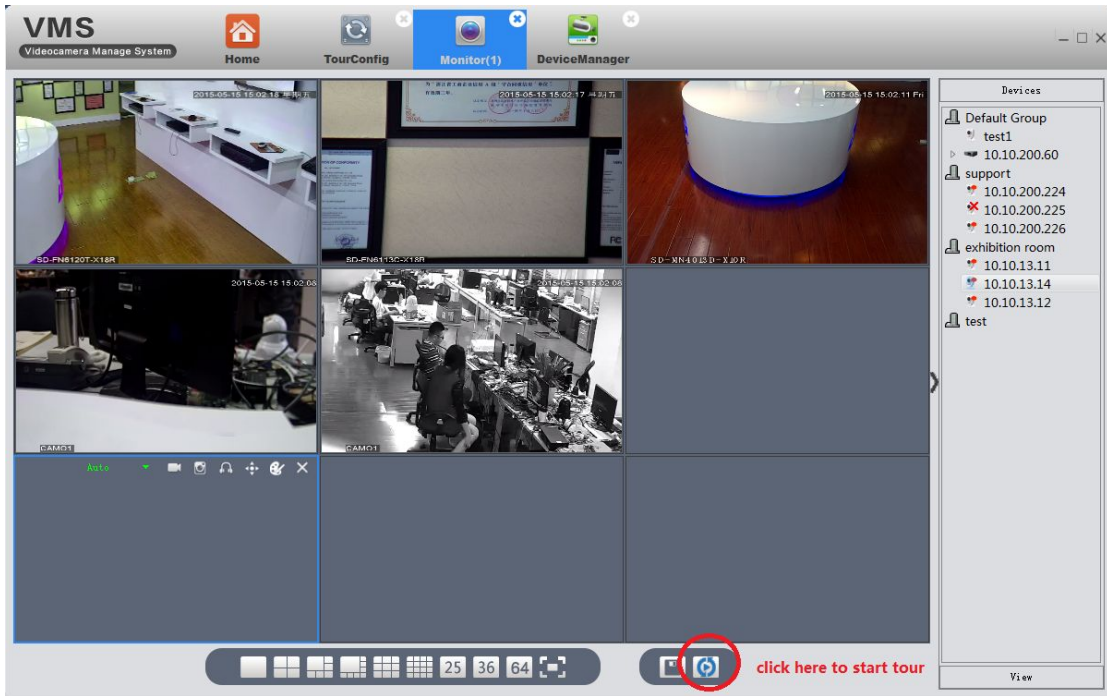
3.11 Tour

1) Add projects

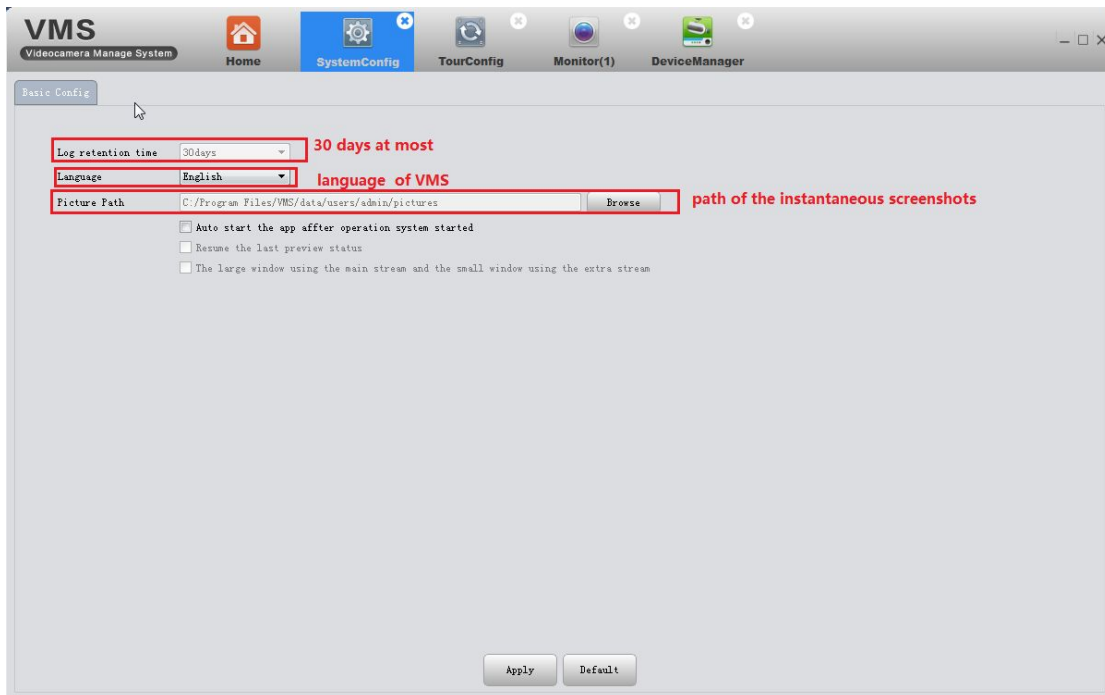


Add projects as the above pic shows.

2) On monitoring page, click tour icon to start.



3.12 System Config



3.13 Extensions

Map and Mycloud can not use at present.